

FAMILY PORCELLANIDAE

Taxon Authority Haworth, 1825

Common Names Porcelain crabs

Species List

<i>Pachycheles pubescens</i>	Holmes, 1900
<i>Pachycheles rudis</i>	Stimpson, 1858
<i>Petrolisthes cinctipes</i>	(Randall, 1839)
<i>Petrolisthes eriomerus</i>	Stimpson 1871

Geographic Range Worldwide except Arctic and Antarctic

Morphology

carapace: dorsoventrally flattened, carapace as long as or wider than long; carapace with linea anomurica; outer orbital spines absent;

rostrum: reduced, or absent.

eye: cornea well developed; ocular acicles absent.

antenna 1: flagellum reduced, vestigial or absent.

maxilliped 3: bases close together; crista dentata present; accessory tooth absent; dactylus simple.

pereopods: 1 chelate; cheliped equal or subequal. pereopods 2 to 4 all of similar form; 2-4 with basis and ischium fused; dactyli of pereopods 2 to 3 simple; pereopod 3 about the same length as pereopod 2; pereopods 3 dactyli and propodi of right and left similar; pereopod 4 simple; **sternum** partially divided; sternite of pereopod 5 reduced, contiguous with preceding sternite; somite of pereopod 5 not fused with first abdominal somite.

abdomen: reduced, carried under thorax, *abdomen* with distinct somites. Epimera (pleura) absent. Male pleopods 3-5 absent. Male with no other sexual modifications; female with no sexual modifications. Uropods present, positioned ventrolaterally, forming tailfan; rami unmodified.

telson : present, divided into multiple plates.

References

basis of record: Türkay, M. (2001). Decapoda, *in*: Costello, M.J. et al. (Ed.) (2001). *European register of marine species: a check-list of the marine species in Europe and a bibliography of guides to their identification. Collection Patrimoines Naturels*, 50: pp. 284-292

McLaughlin, P., S. Ahyong & J.K. Lowry (2002 onwards). 'Anomura: Families.' Version: 2 October 2002. <http://crustacea.net>

PACHYCHELES PUBESCENS

Common Names pubescent porcelain crab

Geographic Range

Bush Rock, Huston Inlet, south side Skincuttle Inlet, Queen Charlotte Islands, British Columbia, to Thurloe Head, Baja California, Mexico; intertidal to 55 m. Distribution in British Columbia-Open coast and, rarely, as far east as Victoria.

Habitat

Rocky areas, occasionally intertidally, but usually subtidally on exposed coast, to 55 m Male and female cohabit.

Morphology

Carapace: convex and slightly broader than long; masked by dense pubescence, longest medially.

pereopods: chelipeds with granules nearly covered by dense pubescence and longer bristles.

abdomen: male with paired gonopods on A2; female with paired uniramous pleopods on A 3-5

telson: with 7 plates.

Size

Carapace: male 18 X 18.5 mm; female 17 X 17.5 mm.

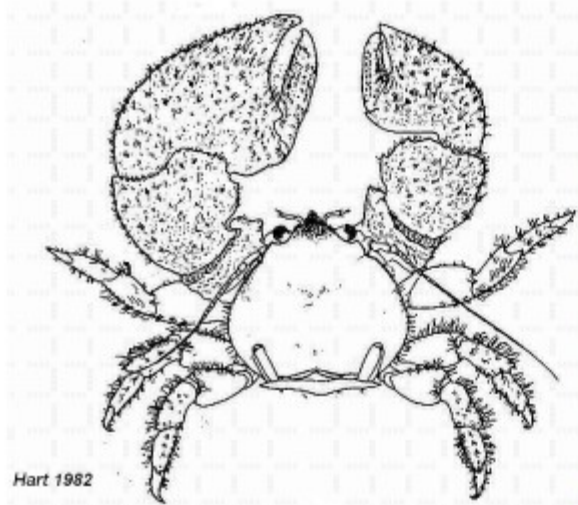
Coloration

Carapace white, dappled with brown, grey and purple; blue and tan "comma" on each branchial area. Cheliped colour masked by mud-coloured pubescence; granules pale violet. Finger tips may be pink. Walking legs with merus blue and brown with variations in depth of colour which creates a banded appearance. Propodus and dactyl with distal white bands. Eyestalk dark brown and white; cornea red-brown with black center.

References

Hart, J.F.L. 1982. Crabs and their relatives of British Columbia. Handbooks British Columbia Provincial Museum. 40:1-266 + figures 1-102

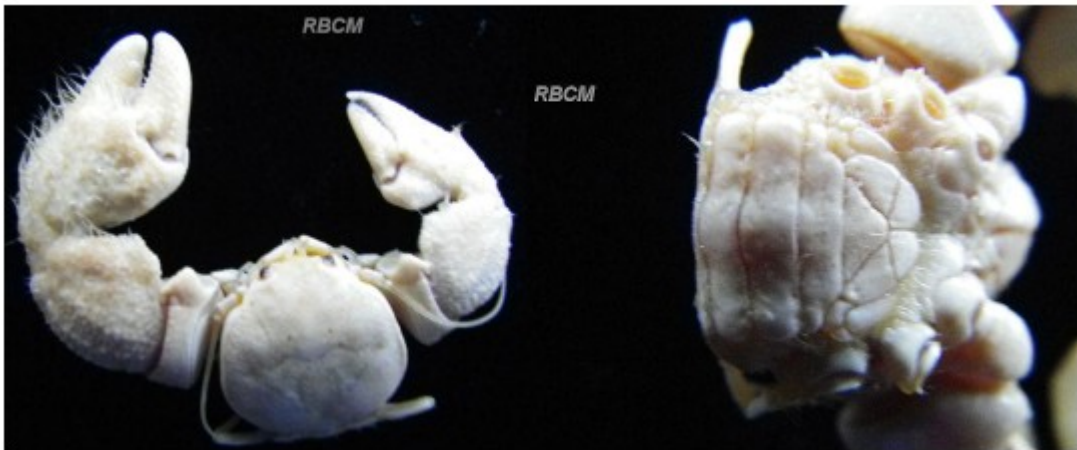
Wicksten, M.K. 2009. Decapod Crustacea of the Californian and Oregonian Zoogeographic Provinces. UC San Diego Scripps Institution of Oceanography Library, Scripps Institution of Oceanography. <http://escholarship.org/uc/item/7sk9t2dz>



Pachycheles pubescens (Pubescent Porcelain Crab)



© Aaron Baldrin



PACHYCHELES RUDIS

Common Names thick clawed porcelain crab

Geographic Range

Kodiak, Alaska, to Bahia de la Magdalena, Baja California, Mexico.

Habitat

Kodiak, Alaska, to Bahia de la Magdalena, Baja California, Mexico; intertidal to 29 m

Morphology

carapace: about as broad as long, convex with flat granules; front with short stiff setae.

pereopods: chelipeds rugose and granular; large granulated knob at base of fixed finger. Chelipeds and walking legs with setae, some of which are plumose.

abdomen: male with pair of gonopods on A2; female with uniramous pleopods on A3 to 5.

telson: 5 plates.

Size

Carapace: male 19 X 19 mm; female 18.5 X 18.5 mm

Coloration

Carapace mottled and striated with grey, brown and white, some with blue granules; white "commas" on branchial region. Chelipeds greenish brown with grey and bluish granules. There is an orange spot at junction of carpus and propodus which is hidden when bent; fingers blue with white tips. Walking legs reticulated brown, grey and white; dactyls banded with dark grey and white; claws brown. Eyestalk dark grey; cornea black with red rim. Abdomen grey-green, and white with light median streak.

References

Hart, J.F.L. 1982. Crabs and their relatives of British Columbia. Handbooks British Columbia Provincial Museum. 40:1-266 + figures 1-102

Wicksten, M.K. 2009. Decapod Crustacea of the Californian and Oregonian Zoogeographic Provinces. UC San Diego Scripps Institution of Oceanography Library, Scripps Institution of Oceanography. <http://escholarship.org/uc/item/7sk9t2dz>





© Gary McDonald



Dave Cowles wallawalla.edu



Dave Cowles wallawalla.edu

PETROLISTHES CINCTIPES

Common Names porcelain crab

Geographic Range

Welcome Harbour, Porcher Island, British Columbia, to Santa Barbara and offshore islands, California; intertidal to 64 m. Distribution in British Columbia-Common on outer coast east to Port Renfrew; no authenticated records for the Strait of Georgia

Habitat

Intertidal among rocks and in mussel beds on open coasts. It is often found higher up on the beach than *P. eriomerus*
Intertidal to 64 m.

Morphology

carapace: with fine granules and striae but no setae

pereopods: Chelipeds large, flattened and finely granulate dorsally. Carpus 1.5-2 X as long as wide, large tuft of soft setae ventrally at base of walking legs with merus and carpus almost naked but propodus dactyl with tufts of short setae.

abdomen: Male with paired gonopods on A2: female with paired pleopods on A4 and A5

Size

Carapace: male 21 X 20 mm; female 24 X 24 mm

Coloration

Granules on carapace red or dark brown, with blue areas; fine grey-blue striae laterally and a blue and white "comma" on side of cardiac area. Cheliped granules dark brown, red-brown, yellow, blue or white forming patches and striations but giving a pebbled look. Walking legs dark brown with small blue patches; with yellow band distally; propodus with yellow median band; yellow with narrow brown band and light brown claw. Abdomen dark, light brown and blue. Outer maxilliped dark brown with last 2 articles scarlet. Eystalk dark brown; cornea dark grey or black.

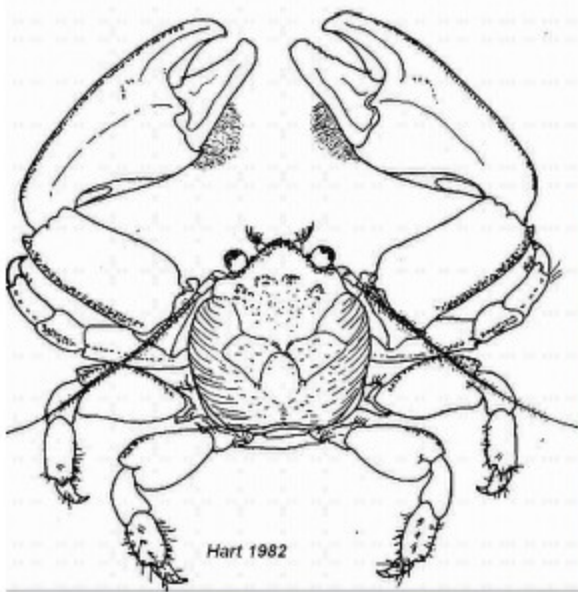
Synonyms

Porcellana rupicola Stimpson, 1857

References

Hart, J.F.L. 1982. Crabs and their relatives of British Columbia. Handbooks British Columbia Provincial Museum. 40:1-266 + figures 1-102

Wicksten, M.K. 2009. Decapod Crustacea of the Californian and Oregonian Zoogeographic Provinces. UC San Diego Scripps Institution of Oceanography Library, Scripps Institution of Oceanography. <http://escholarship.org/uc/item/7sk9t2dz>



PETROLISTHES ERIOMERUS

Common Names flattop crab

Geographic Range

Chicagof Island, Alaska to La Jolla, California. Type locality Mendocino, California

Habitat

Under rocks in lowest intertidal zone, rarely to 86 m. Tolerant of sand and silt.

Morphology

carapace: front broad, triangular, with deep median groove; about as long as wide, anterior part covered with rough granules, posterolateral areas plicate.

pereopods: chelipeds covered with large granules; merus with strongly projecting lobe on anterior margin; carpus twice as long as wide, margins subparallel; outer margin serrate and ending in distal tooth. Chela naked, gape filled with thick pubescence. Ambulatory legs granular, merus not inflated, all segments with setae

Size

Carapace length: to 19 mm

Coloration

Granules on carapace red-brown or white with blue tinges in grooves, blue and white comma-like mark on either side of cardiac region. Chelipeds with dark and light red granules with orange areas and blue-white patches at junctions of segments; blue spot at base of dactyl. Walking legs brown with 2 patches of yellow on merus; red and yellow band proximally and yellow distally on propodus; dactyl brown and yellow. Outer maxillipeds with both surfaces of last 2 articles bright blue. Individuals ready to molt may have a bluish color.

References

Hart, J.F.L. 1982. Crabs and their relatives of British Columbia. Handbooks British Columbia Provincial Museum. 40:1-266 + figures 1-102

Wicksten, M.K. 2009. Decapod Crustacea of the Californian and Oregonian Zoogeographic Provinces. UC San Diego Scripps Institution of Oceanography Library, Scripps Institution of Oceanography. <http://escholarship.org/uc/item/7sk9t2dz>

