

FAMILY EPIALTIDAE

Taxa Authority MacLeay, 1838

Common Names kelp crabs

Taxonomy Decapoda
Brachyura
Majoidea

Species List

<i>Chorilia longipes</i>	Dana, 1851	Longhorn Decorator Crab
<i>Pugettia foliata</i>	Stimpson, 1860	Foliate Kelp Crab
<i>Pugettia gracilis</i>	Dana, 1851	Graceful Kelp Crab
<i>Pugettia producta</i>	(Randall, 1839)	Northern Kelp Crab
<i>Pugettia richi</i>	Dana, 1851	Cryptic Kelp Crab
<i>Scyra acutifrons</i>	Dana, 1851	Sharp nose Crab

Description

Lateral margin often lamellate. **Pseudorostrum** double to single. **Orbits** very sunken, reduced, never entirely concealing cornea, postorbital spine sometimes present, intercalated spine absent.

Eyestalks short, feebly movable to immovable, either concealed by preorbital and/or postorbital spine or sunken in sides of large beak-like pseudorostrum. Basal antennal segment trapezoidal. Merus of **third maxilliped** as wide as ischium, sometimes auriculate. First pair of ambulatory legs longer than other three pairs. Dactyli of ambulatory legs prehensile or subchelate. First gonopod usually slender, weakly curved, aperture usually terminal, apex simple or expanded into lobes.

Abdominal segments from freely articulating to variously fused.

Type genus: *Epialtus* H. Milne Edwards, 1834.

References

basis of record: Martin, J.W.; Davis, G.E. (2001). An updated classification of the recent Crustacea. *Science Series*, 39. Natural History Museum of Los Angeles County: Los Angeles, CA (USA). vii, 123 pp.

Stevcic, Z. 2005. The reclassification of Brachyuran crabs (Crustacea, Decapoda, Brachyura) Nat. Croat. Vol.14, Suppl. 1: 1-159. Zagreb

CHORILIA LONGIPES

Geographic Range

Japan; Shumagin Bank and Kodiak, Alaska, to Cortez Bank, Mexico; from 22 to 1190 m
Distribution in British Columbia common.

Habitat

Subtidal and deep water, on sand, mud, shell, gravel and rocky areas.

Morphology

eye: stalk short; cornea rounded.

rostrum: two long cylindrical horns diverging from base.

carapace: pearshaped, inflated, knobby and spined. Preocular spine prominent.

pereopods: P2-5 long, smooth and cylindrical; P2 longer than P1.

Size

Carapace: male 55 X 45 mm; female 54 X 40 mm

Coloration

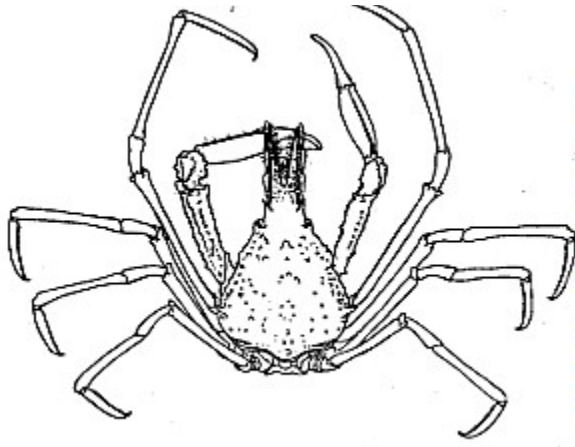
Carapace white with orange spines; rostrum orange. Chelipeds orange-red with deepest colour on spines and ridges; finger scarlet with white band and white tips. Walking legs red with white bands, 2 on merus, 1 on carpus and 1 on propodus.

References

Citation: Davie, P. (2012). *Chorilia longipes*. Accessed through: World Register of Marine Species at <http://www.marinespecies.org/aphia.php?p=taxdetails&id=441520> on 2013-02-11

Hart, J.F.L. 1982. Crabs and their relatives of British Columbia. British Columbia Provincial Museum Handbook 40. Victoria, British Columbia.

Wicksten, Mary K., 2012. Decapod Crustacea of the Californian and Oregonian Zoogeographic Provinces. 307 pp. Magnolia Press.



PUGETTIA FOLIATA

Geographic Range

Unalaska, Alaska, to Port Arguello, Santa Cruz and Santa Rosa Islands, Calif; intertidal to 128 m. Distribution in British Columbia: Only on open coast of Vancouver Island (as far east as Sooke) and Queen Charlotte Islands

Habitat

Intertidal, among rocks; often encrusted with bryozoans and other such forms.

Morphology

rostrum: short and bifid.

carapace: flat, smooth, pentagonal, with margins laminate and winglike. Shape of carapace like a maple leaf.

pereopods: chelipeds stout. P2 pair of walking legs much longer than others.

Size

Carapace: male 35 X 39 mm; female 29 X 32.4 mm.

Coloration

Considerable variation in colour and patterns. Carapace may be a combination of kelp brown, tan, pink, white, dove grey, light to dark brown, maroon, or red, and frequently with a broad white V medially. Chelipeds also vary in color. Walking legs banded usually with white and tan.

Synonyms

Mimulus acutifrons A. Milne-Edwards, 1867

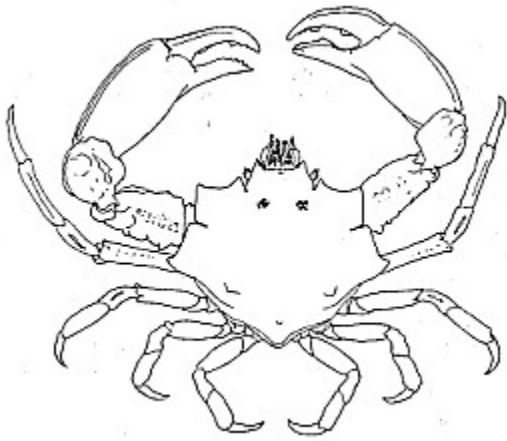
Mimulus foliatus Stimpson, 1860

References

Citation: Davie, P. (2012). *Mimulus foliatus* Stimpson, 1860. Accessed through: World Register of Marine Species at <http://www.marinespecies.org/aphia.php?p=taxdetails&id=441474> on 2013-02-11

Hart, J.F.L. 1982. Crabs and their relatives of British Columbia. British Columbia Provincial Museum Handbook 40. Victoria, British Columbia.

Wicksten, Mary K. 2012. Decapod Crustacea of the Californian and Oregonian Zoogeographic Provinces. 307 pp. Magnolia Press.



Aaron Baldwin



Steve Lonhart / NOAA MBNMS



Steve Lonhart / NOAA MBNMS



© Gary McDonald



© Gary McDonald

PUGETTIA GRACILIS

Geographic Range

Aleutian Islands, Alaskan to Monterey Bay, California; intertidal to 140 m.

Distribution in British Columbia: Common intertidally particularly in sheltered waters. On outer coasts *P. richii* seems to be the dominant form although *P. gracilis* is present.

Habitat

Common among eelgrass, kelp and encrusting algae intertidal and subtidal. Carapace "decorated" with bits of algae and other objects.

Morphology

maxillipeds: Ischium of outer maxillipeds and palp each with a longitudinal groove

carapace: with hepatic area greatly expanded.

pereopods: Mature male with large cheliped; merus and Carpus with 3 or 4 longitudinal sharp ridges; palm large and swollen.

Size

Carapace: male 53 X 34 mm; female 35 X 28 mm.

Coloration

Carapace, chelipeds and walking legs may be blue, brownish green, kelp brown, red, pink, orange or opaque white in various combinations. Abdomen usually brown with 6th segment and telson white. Fingers dark grey or blue with orange tips and teeth.

Synonyms

[Pugettia lordii](#) Spence Bate, 1864

Remarks

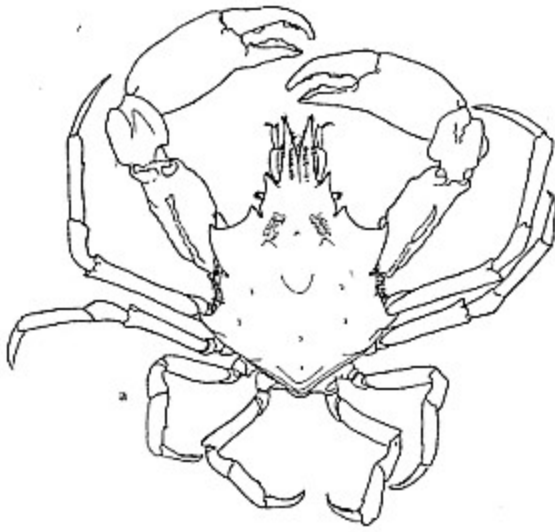
The dark grey fingers and orange tips and teeth serve to distinguish living *P. gracilis* from *P. richii* which has violet or reddish fingers and white tips and teeth

References

Citation: Davie, P. (2012). *Pugettia gracilis* Dana, 1851. Accessed through: World Register of Marine Species at <http://www.marinespecies.org/aphia.php?p=taxdetails&id=441478> on 2013-02-11

Hart, J.F.L. 1982. Crabs and their relatives of British Columbia. British Columbia Provincial Museum Handbook 40. Victoria, British Columbia.

Wicksten, Mary K. 2012. Decapod Crustacea of the Californian and Oregonian Zoogeographic Provinces. 307 pp. Magnolia Press.



Graceful kelp crab
Pugettia gracilis

Orange tipped claws

Velcro like setae toward front of carapace

"Spidery" long legs

ODFW

Small size - 1"



RBCM



RBML



RBML



ODFW

PUGETTIA PRODUCTA

Geographic Range

Prince of Wales Island (55°26'N, Alaska, to Asunción Point, Mexico; intertidal to 73 m. Distribution in British Columbia»-Common.

Habitat

Among seaweed, especially bull kelp (*Nereocystis*). Adults often on piles under wharves.

Morphology

rostrum: bifid with concave inner margins and hooked setae on dorsal surface of base and a few patches of small stubby setae.

carapace: roughly quadrilateral, surface smooth with two large teeth on each lateral margin and with small preocular and postocular spines.

pereopods: P1 hand smooth and palm slightly swollen; cutting teeth without any gape in female and immature male. In adult male, cheliped large and palm swollen with some gape between teeth. P2-5 subcylindrical, stout, and with strong curved claws with spines on ventral margins.

Size

Carapace: males 107 X 93 mm; female 92 X 78 mm

Coloration

Carapace and dorsal surface of chelipeds and walking legs mainly kelp brown. Ventrally, chelipeds with some dark red on merus and palm with fingers red and scarlet with yellowish teeth. Walking legs with some dark red and yellow ventrally; dactyls greenish-brown and light brown; claws dark brown. Abdomen, with patches of deep yellow and light brown on sternum and outer maxillipeds; epistome brown with teeth and ridges red, scarlet or yellow, varying amount of dark red ventrally. Young kelp crabs are brown without the bright colours of adults.

Synonyms

Epialtus productus Randall, 1840

Remarks

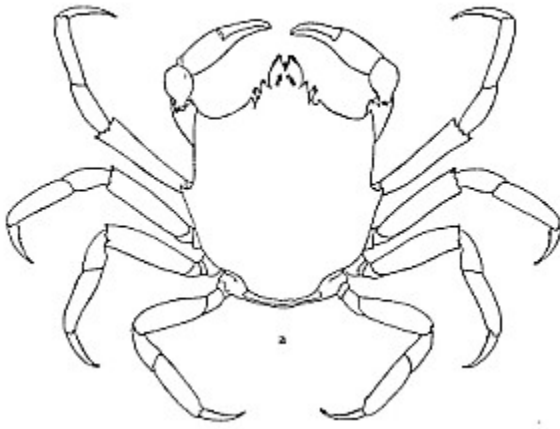
Carapace may be covered with barnacles in large specimens, but usually no organic matter is attached to hooked setae, in contrast to the camouflaging activities of *P. gracilis* and *P. richii*.

References

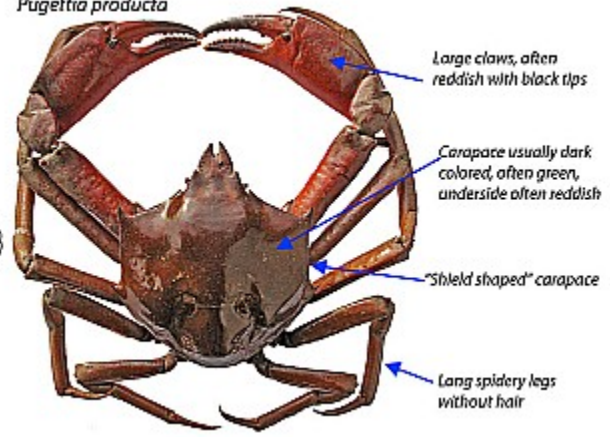
Citation: Davie, P. (2012). *Pugettia producta* (Randall, 1840). Accessed through: World Register of Marine Species at <http://www.marinespecies.org/aphia.php?p=taxdetails&id=240780> on 2013-02-11

Hart, J.F.L. 1982. Crabs and their relatives of British Columbia. British Columbia Provincial Museum Handbook 40. Victoria, British Columbia.

Wicksten, Mary K., 2012. Decapod Crustacea of the Californian and Oregonian Zoogeographic Provinces. 307 pp. Magnolia Press.



Northern kelp crab
Pugettia producta



PUGETTIA RICHII

Geographic Range

Prince of Wales Island, Alaska, to San Geronimo Island, Mexico; intertidal to 97.
Distribution in British Columbia: outer coasts.

Habitat

Common intertidally on open coast amongst algae and eelgrass. Often decorated with coralline algae, bryozoans etc.

Morphology

maxillipeds: Ischium and palp of outer maxilliped smooth.

carapace: with hepatic area less expanded than [*i*]P. gracilis[/*i*] and marginal projections narrower.

pereopods: No sharp ridges on merus of cheliped.

Size

Carapace: male 48 X 33 mm; female 33 X 27 mm

Coloration

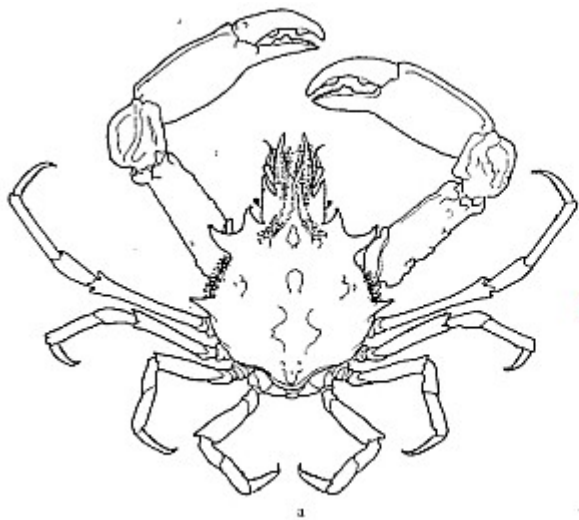
Carapace purplish red with violet patches and white knobs. Chelipeds purplish red, yellow and white, particularly ventrally; palm with inner face pale brown and white; outer purple-brown and white; fingers pale violet with red streaks; teeth white. Walking legs red-brown, with a dirty white band medially on each segment; ventrally mostly white and violet. Antennules and antennae violet, white and brown. Eystalk violet and white; cornea black with gold flecks.

References

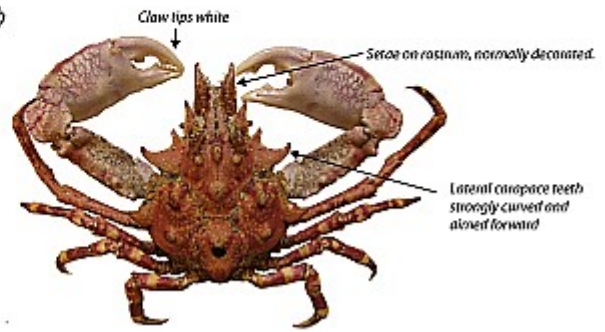
Citation: Davie, P. (2012). *Pugettia richii* Dana, 1851. Accessed through: World Register of Marine Species at <http://www.marinespecies.org/aphia.php?p=taxdetails&id=441490> on 2013-02-11

Hart, J.F.L. 1982. Crabs and their relatives of British Columbia. British Columbia Provincial Museum Handbook 40. Victoria, British Columbia.

Wicksten, Mary K., 2012. Decapod Crustacea of the Californian and Oregonian Zoogeographic Provinces. 307 pp. Magnolia Press.



Cryptic kelp crab
Pugettia ricci



SCYRA ACUTIFRONS

Geographic Range

Kachemak Bay, Cook Inlet, Alaska to Point San Carlos, Baja California. Type locality Oregon.
Distribution in British Columbia: common

Habitat

Rocks, rocky reefs, pilings; intertidal zone to 114 m but usually less than 50 m; the species is rare in the intertidal zone.

Morphology

antenna: short, flat and hidden under rostrum

eyes: small

rostrum: two large, long horns. wide and flattened with divergent tips.

carapace: somewhat triangular and thick with grooves. knobs and lumps symmetrically arranged. Hooked setae on carapace. seldom used for decoration. but the surface is often encrusted by a growth of bryozoa, hydroids and sponges.

pereopods: Chelipeds large in mature male with numerous blunt knobs on ischium. merus and carpus, in rows on margins and scattered in between. Hand elongate, with sharp dorsal and ventral ridges; fingers slender with gaps; dactyl with small teeth distally and 1 large tooth medially. P2-4 short and relatively stout, with short stiff. club-shaped setae; dactyl about ½ the length of propodus.

abdomen: of male narrow with 3 flat knobs per segment; telson smooth and triangular.

Size

Carapace: male 55 X 45 mm; female 41 X 30 mm

Coloration

Dull tan to gray with red marks on chelipeds, walking legs

References

Citation: Davie, P. (2012). *Scyra acutifrons* Dana, 1852. Accessed through: World Register of Marine Species at <http://www.marinespecies.org/aphia.php?p=taxdetails&id=441698> on 2013-02-11

Hart, J.F.L. 1982. Crabs and their relatives of British Columbia. British Columbia Provincial Museum Handbook 40. Victoria, British Columbia.

Wicksten, Mary K. 2012. Decapod Crustacea of the Californian and Oregonian Zoogeographic Provinces. 307 pp. Magnolia Press.

Sharpnose crab
Scyra acutifrons

